

# West Grampian Deer Management Group

## Part 1: Deer Management Working Plan

### 2016 -2017



**DMG Chairman:** Rory Stormonth Darling  
Email: [rory@pjpan.co.uk](mailto:rory@pjpan.co.uk)

**DMG Secretary:** Julian Clarke  
Email: [jcec@atholl-estates.co.uk](mailto:jcec@atholl-estates.co.uk)

**DMG Website:** <http://wgrampiandmg.deer-management.co.uk/>

***Version amendment from V3: Densities added for East Sub Group***

Prepared by: **Dr Linzi Seivwright** BSc Phd

**Caorann**  
Tel. 07547 676509  
Email: [linzi@caorann.com](mailto:linzi@caorann.com)  
[www.caorann.com](http://www.caorann.com)



## Contents

|      |   |    |
|------|---|----|
| 3.1  | Introduction .....  | 3  |
|      | Figure 1: Deer management units and Boundary between East and West Sub Groups ..... | 4  |
| 3.2  | Group Objectives and Targets .....  | 5  |
| 3.3  | DMG Counts .....  | 5  |
| 3.4  | DMG Culls .....   | 6  |
|      | Table 2: Historic DMG Culls .....   | 6  |
|      | Figures 2 a & b: Historic Culls by Sub Group .....                                  | 7  |
| 3.4  | West Sub Group Target Densities .....   | 8  |
|      | Tables 3a & 3b.....   | 8  |
|      | Table 4: Current and future population figures .....                                | 9  |
| 3.5  | East Sub Group Target Densities .....   | 11 |
|      | Figure 3: Historic Culls on Glenfernate.....  | 11 |
|      | Table 5: Current and future population figures .....                                | 11 |
| 3.5  | Mechanisms to manage deer .....   | 13 |
| 3.6  | Designated Sites .....  | 17 |
| 3.7  | Deer Management and Woodlands .....   | 18 |
| 3.8  | Wider Habitat Management (Including Peatland) .....                                 | 20 |
| 3.9  | Non-native Species Management .....   | 21 |
| 3.10 | Cultural and Historical Features .....  | 22 |
| 3.11 | Competence and Training.....  | 22 |
| 3.12 | Public Health and Well-being .....  | 23 |
| 3.13 | Economics .....   | 24 |
| 3.14 | Communication.....  | 26 |
| 3.15 | Deer Welfare .....  | 26 |
| 3.6  | Monitoring and Review Schedule.....   | 28 |

### 3.1 Introduction

The purpose of West Grampian Deer Management Group is to manage deer on a collective basis, in accordance with Scottish Government strategy (Scotland's Wild Deer: A National Approach, 2015), the [Code of Practice on Deer Management](#) (2012), and in a manner that integrates different land-use objectives, recognising that compromises over objectives may be required where conflict occurs.

The overall purpose of this Working Plan is to provide:

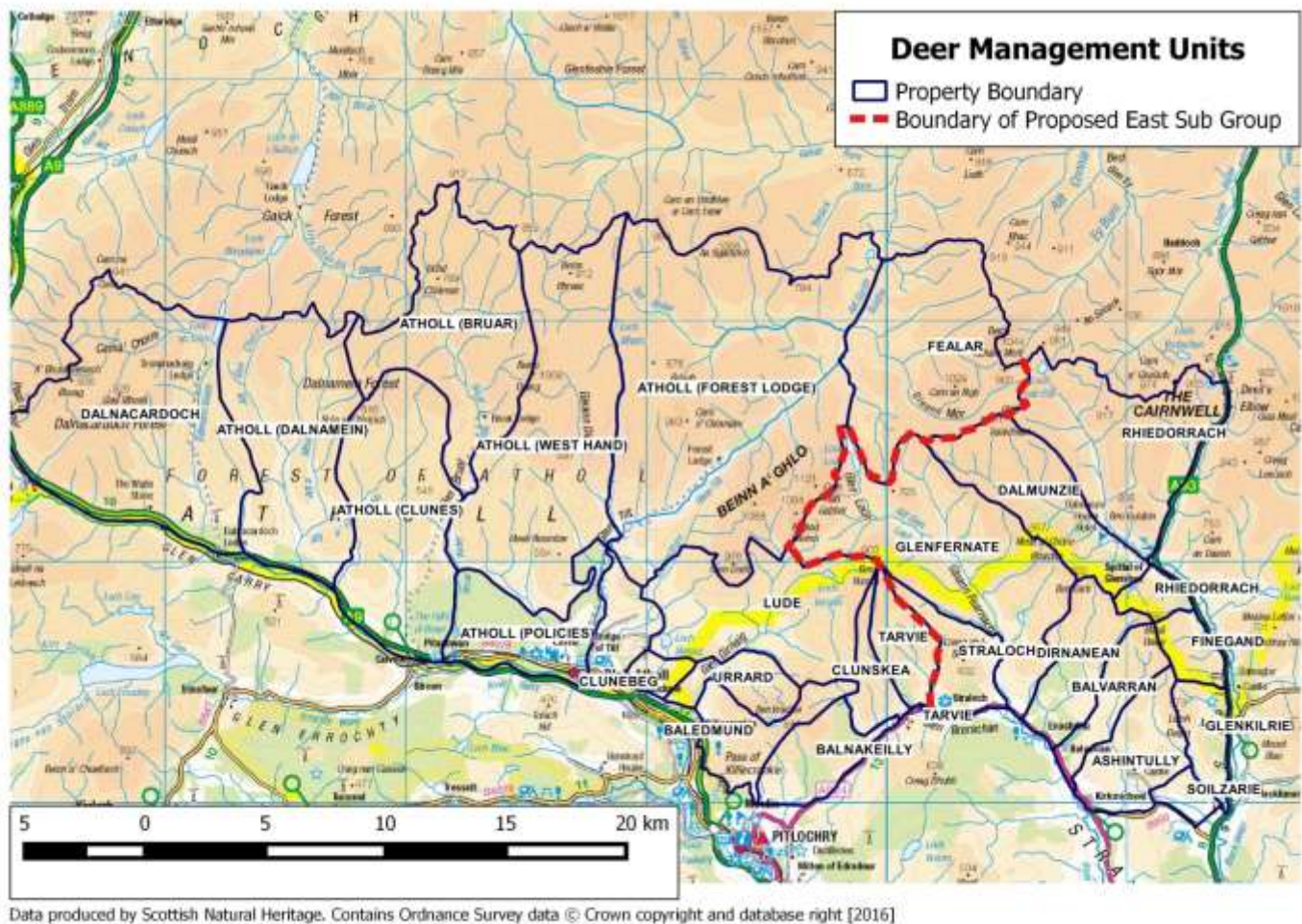
- The necessary up-to-date information including population models to assist the DMG in making informed, collective management decisions at a landscape level;
- A summary of actions (from Part 1) to ensure that deer management in the local area will be delivered according to the targets set out and agreed in the Deer Management Plan.

This Working Plan sets out the most up to date information on culls, counts and population targets as well as a summary of specific actions the Deer Management Group (DMG) will undertake which are detailed in Part 1 of the plan. The Working Plan will be reviewed at least annually, with a systematic review of the whole plan taking place at the end of the five year period. A complete summary of all the Background Information relevant to this plan and the functioning of the DMG can be found in Parts 1 and 2.

West Grampian DMG covers an area of approximately **75, 849** hectares and is made up of 23 main management units plus Pitcarmick Estate. For the purposes of delivering effective deer management the main Group has been split into two (Figure 1).



Figure 1: Deer management units and Boundary between East and West Sub Groups



### 3.1.1 West Sub Group Members

- Atholl –split into 5 Beats (Dalnamein, Clunes, Glen Bruar, West Hand and Forest Lodge). Atholl also carry out deer management on Clunebeg.
- Baledmund
- Balnakeilly
- Clunskea
- Dalnacardoch
- Fealar
- Lude
- Tarvie
- Urrard

### 3.1.2 Cross-DMG Working Group Members

- Atholl Estates (WGDMG)
- Dalnacardoch (WGDMG)
- Mar Lodge (East Grampian Sub-Area)
- Wildland Ltd (Cairngorms & Speyside DMG)
- Cairngorms National Park Authority
- Scottish Natural Heritage

### 3.1.3 East Sub Group Members

- Ashintully
- Balvarran
- Dalmunzie
- Dirnanean
- Finegand
- Glenferdate
- Pitcarmick (although most of this property lies outwith the DMG area, they are active members of DMG)
- Rhiedorrach
- Straloch

## 3.2 Group Objectives and Targets

Over the next 5 years, the main deliverables of the Group are as follows:

- To have formed two Sub Groups (East and West) to deal with practical deer management at a local level and to deliver the target densities agreed;
- To use the Cross-DMG Working Group and the Cairngorms National Park Partnership Plan (2017-22) consultation (see Part 1 Section 1.3 for details) to review deer movements, review DMG boundaries and implement collaborative deer management to deliver the combined objectives of conservation and the sustainable harvest of deer at a landscape;
- To have reduced deer numbers in both Sub Groups to reduce localised deer impacts across the DMG resulting in both conservation and sustainable deer management objectives being met;
- To have implemented DMG wide Habitat Monitoring of Heather Moorland and Blanket Bog to help inform future management;
- To have implemented management to ensure Designated Sites are in Favourable/Unfavourable Recovering Due to management status;
- To have conducted two full aerial counts of the population in Winter 2017 & 2020;
- To have secured additional Funding through ECAF to carry out a review of existing native woodland and explore opportunities for woodland expansion.

## 3.3 DMG Counts

The last full foot count of the DMG in 2015 indicated that numbers had declined from a density of 23.4 deer per km<sup>2</sup> to 18.3 deer per km<sup>2</sup> in 2010 which was a full helicopter count of the DMG (Table 1).

*Table 1: Historic Counts*

|                 | WG DMG (All) |      |      |       |      |
|-----------------|--------------|------|------|-------|------|
|                 | S            | H    | C    | T     | D    |
| Feb 2001 (Heli) | 6392         | 8929 | 2602 | 17923 | 23.5 |
| Feb 2005 (Heli) | 6292         | 8908 | 2658 | 17858 | 23.4 |
| Jan 2010 (Heli) | 6255         | 9405 | 2808 | 18468 | 24.2 |
| 2015 (Foot)     | 5111         | 6780 | 2025 | 13916 | 18.3 |

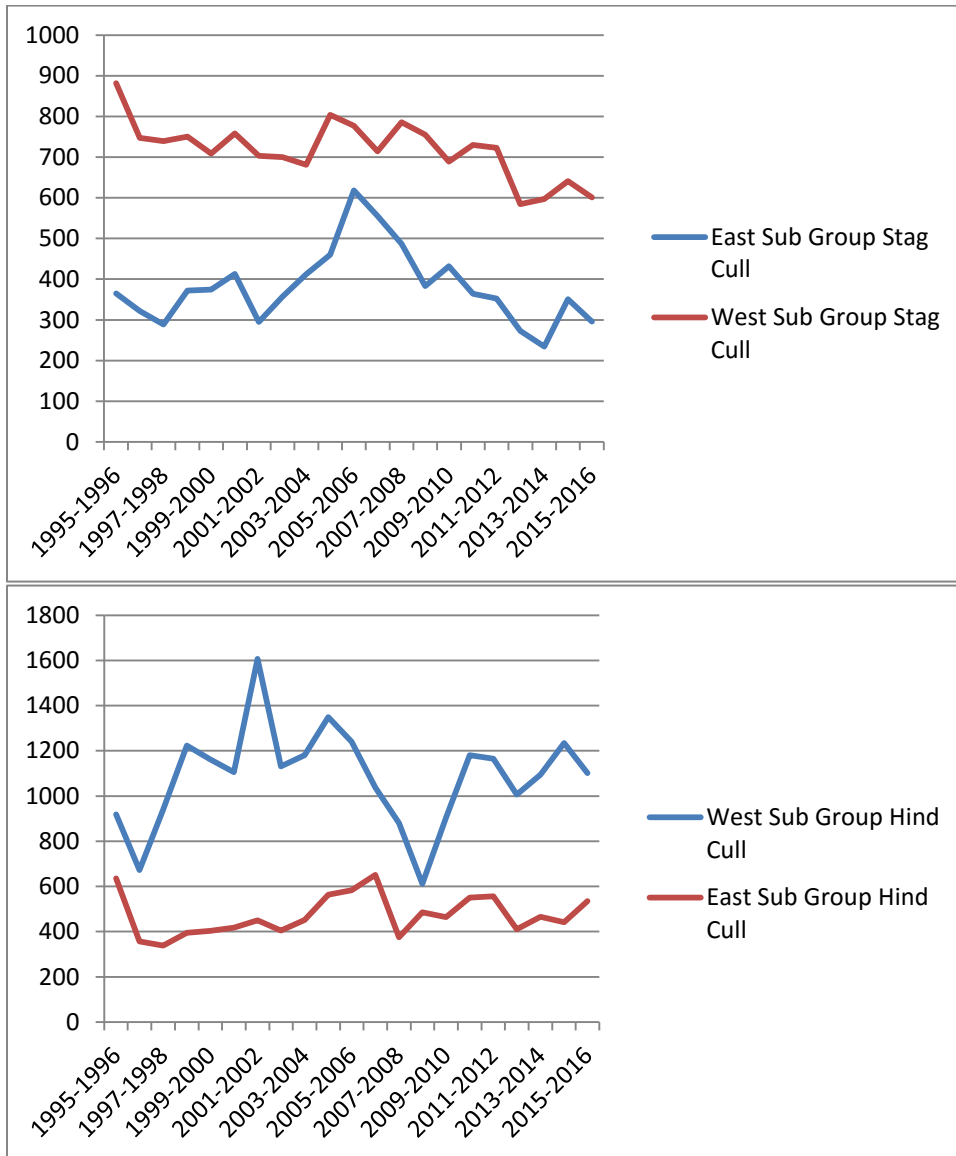
### 3.4 DMG Culls

Culls have generally peaked following a helicopter count (years highlighted in red in Table 2).

Table 2: Historic DMG Culls

|           | WG DMG (All) |      |     |      | East Sub Group |     |     |      | West Sub Group |      |     |      |
|-----------|--------------|------|-----|------|----------------|-----|-----|------|----------------|------|-----|------|
|           | S            | H    | C   | T    | S              | H   | C   | T    | S              | H    | C   | T    |
| 1995-1996 | 1247         | 1555 | 258 | 3060 | 365            | 636 | 62  | 1063 | 882            | 919  | 196 | 1997 |
| 1996-1997 | 1069         | 1030 | 220 | 2319 | 322            | 357 | 36  | 715  | 747            | 673  | 184 | 1604 |
| 1997-1998 | 1028         | 1278 | 249 | 2555 | 289            | 338 | 9   | 636  | 739            | 940  | 240 | 1919 |
| 1998-1999 | 1122         | 1618 | 338 | 3078 | 372            | 395 | 124 | 891  | 750            | 1223 | 214 | 2187 |
| 1999-2000 | 1083         | 1565 | 452 | 3100 | 374            | 403 | 110 | 887  | 709            | 1162 | 342 | 2213 |
| 2000-2001 | 1171         | 1522 | 411 | 3104 | 413            | 417 | 85  | 915  | 758            | 1105 | 326 | 2189 |
| 2001-2002 | 998          | 2057 | 288 | 3343 | 295            | 450 | 52  | 797  | 703            | 1607 | 236 | 2546 |
| 2002-2003 | 1057         | 1536 | 132 | 2725 | 357            | 405 | 29  | 791  | 700            | 1131 | 103 | 1934 |
| 2003-2004 | 1093         | 1633 | 188 | 2914 | 412            | 452 | 38  | 902  | 681            | 1181 | 150 | 2012 |
| 2004-2005 | 1264         | 1913 | 298 | 3475 | 460            | 564 | 19  | 1043 | 804            | 1349 | 279 | 2432 |
| 2005-2006 | 1395         | 1823 | 294 | 3512 | 618            | 583 | 93  | 1294 | 777            | 1240 | 201 | 2218 |
| 2006-2007 | 1269         | 1688 | 314 | 3271 | 555            | 651 | 91  | 1297 | 714            | 1037 | 223 | 1974 |
| 2007-2008 | 1273         | 1255 | 205 | 2733 | 487            | 375 | 29  | 891  | 786            | 880  | 176 | 1842 |
| 2008-2009 | 1138         | 1098 | 303 | 2539 | 383            | 486 | 162 | 1031 | 755            | 612  | 141 | 1508 |
| 2009-2010 | 1121         | 1369 | 208 | 2698 | 432            | 465 | 24  | 921  | 689            | 904  | 184 | 1777 |
| 2010-2011 | 1094         | 1732 | 372 | 3198 | 364            | 551 | 148 | 1063 | 730            | 1181 | 224 | 2135 |
| 2011-2012 | 1075         | 1722 | 348 | 3145 | 352            | 557 | 98  | 1007 | 723            | 1165 | 250 | 2138 |
| 2012-2013 | 857          | 1418 | 286 | 2561 | 273            | 411 | 65  | 749  | 584            | 1007 | 221 | 1812 |
| 2013-2014 | 831          | 1560 | 311 | 2702 | 234            | 466 | 102 | 802  | 597            | 1094 | 209 | 1900 |
| 2014-2015 | 992          | 1675 | 390 | 3057 | 351            | 441 | 89  | 881  | 641            | 1234 | 301 | 2176 |
| 2015-2016 | 897          | 1636 | 416 | 2949 | 296            | 535 | 158 | 989  | 601            | 1101 | 258 | 1960 |

Figures 2 a & b: Historic Culls by Sub Group



## 3.4 West Sub Group Target Densities

### 3.4.1 Atholl Estates

The densities presented in these tables are Winter densities only and will fluctuate seasonally. Target densities for hinds have been set for Atholl (Tables 3a & 3b) in order to reduce impacts on wider upland habitats and to maintain a sustainable cull. The stag population is not static and therefore must be considered at a landscape level as part of a shared resource (according the Deer Code).

Tables 3a & 3b

|      | Forest Lodge & West Hand |      |     |      |      |
|------|--------------------------|------|-----|------|------|
|      | S                        | H    | C   | T    | D    |
| 2001 | 0                        | 0    | 0   | 0    | 0    |
| 2005 | 581                      | 2206 | 658 | 3445 | 16.7 |
| 2010 | 1060                     | 2416 | 721 | 4197 | 20.3 |
| 2015 | 1285                     | 2164 | 647 | 4096 | 19.8 |
| 2021 | 1285                     | 1500 | 450 | 3235 | 15.6 |

|      | Bruar, Clunes and Dalnamein |      |      |      |      |
|------|-----------------------------|------|------|------|------|
|      | S                           | H    | C    | T    | D    |
| 2001 | 2988                        | 5290 | 1517 | 9795 | 67.3 |
| 2005 | 1339                        | 1990 | 594  | 3923 | 27   |
| 2010 | 1208                        | 2188 | 654  | 4050 | 27.8 |
| 2015 | 1757                        | 1544 | 461  | 3762 | 25.9 |
| 2021 | 1757                        | 1201 | 360  | 3318 | 22.8 |

### 3.4.2 Dalnacardoch

For the features on Drummochter Hills SAC, the SCM results for showed the following:

- **Montane acid grassland:** all 27 sampling points passed whereas on the previous assessment some points failed due to high levels of herbivore impact. The status of the feature is judged to be 'favourable-recovered'.
- **Montane willow scrub:** 8 out of 12 sampling points plots failed. To reduce impacts on the highly palatable Montane Willow Scrub feature would likely require a complete absence of herbivore pressure.
- **Plants in crevices on acid rocks :** 1 out of 11 sampling points failed due to heavily-grazed Blaeberry.
- **Tall herb communities:** 1 out of 8 plots failed due to over-grazing.
- **Species-rich grassland:** 13 out of 25 points failed for a range of reasons the key being insufficient cover of forbs.

Aside from Willow Scrub (which, given its palatability would require negligible browsing pressure to improve), other features are considered to be improving with regards to browsing pressure and the Estate proposes to continue to focus cull on the SAC to bring the other features into Favourable condition.

The last winter count in 2015 is not considered to reflect the true numbers on the Designated Site during summer. As it is summering hinds that are likely to have the greatest impact on the Designated Site features, the Estate is proposing to carry out a deer count in Summer 2016 and will also use the results from the Helicopter Count in 2017 to set future cull targets. In the meantime, the estate will target hind culls on the most sensitive areas.



### 3.4.4. West Sub Group Population Model

Based on the proposed target densities of Atholl and continued targeting of hinds on the Drummochter Hills SAC, the following population model is based on a combined “aspirational” target population of **9754** deer which is a density of 17 deer km<sup>2</sup> (Table 4). This target is based on 2015 counts but will be updated following the 2017 count. It should be noted that the current aspirational stag harvest of 645 stags would require a population of 19.4 deer per km<sup>2</sup> (approx. 4837 stags, 4837 hinds and 1451 calves).

*Table 4: Current and future population figures*

|                   | Stag<br>harvest | 2015 |      |      |       |      | Area  | 2021 Aspiration |      |      |      |
|-------------------|-----------------|------|------|------|-------|------|-------|-----------------|------|------|------|
| Fealar            | 55              | 72   | 464  | 139  | 675   | 13.7 | 4928  | 72              | 464  | 139  | 675  |
| Tarvie            | 25              | 68   | 55   | 16   | 139   | 14.2 | 976   | 68              | 55   | 17   | 140  |
| Balnkeilly        | 30              | 42   | 284  | 85   | 411   | 31.2 | 1317  | 42              | 284  | 85   | 411  |
| Atholl FL &<br>WH | 190             | 1285 | 2164 | 647  | 3678  | 17.8 | 20681 | 1285            | 1500 | 450  | 3235 |
| Atholl B,C &<br>D | 160             | 1757 | 1544 | 461  | 3762  | 25.9 | 14544 | 1757            | 1200 | 360  | 3317 |
| Baledmund         | 0               | 53   | 65   | 19   | 137   | 10.2 | 1340  | 53              | 65   | 20   | 138  |
| Clunskea          | 0               | 0    | 0    | 0    | 0     | 0    | 717   | 0               | 0    | 0    | 0    |
| Dalnacardoch      | 100             | 460  | 222  | 66   | 748   | 9.88 | 7572  | 460             | 222  | 67   | 749  |
| Lude              | 50              | 65   | 330  | 98   | 493   | 12.9 | 3818  | 65              | 330  | 99   | 494  |
| Urrard            | 35              | 67   | 119  | 35   | 221   | 24.3 | 909   | 67              | 119  | 36   | 222  |
| Clunebeg          | 0               | 374  | 0    | 0    | 374   | 104  | 359   | 374             | 0    | 0    | 374  |
| Totals            | 645             | 4243 | 5247 | 1566 | 10638 | 18.6 | 57161 | 4243            | 4239 | 1272 | 9754 |

The current population model (**based on 2015 count**) suggests a cull of 1100 hinds (actual in 2016), 1100 hinds in 2016 and 600 hinds in 2017 should bring the population close to the current aspirational density of 17 deer per km<sup>2</sup> by 2018 with closer to a 1:1 sex ratio. ***The Group would be advised to continue with current cull based on 2016 figures until the helicopter count in 2017.*** The group will have to consider the sustainability of future stag culls.

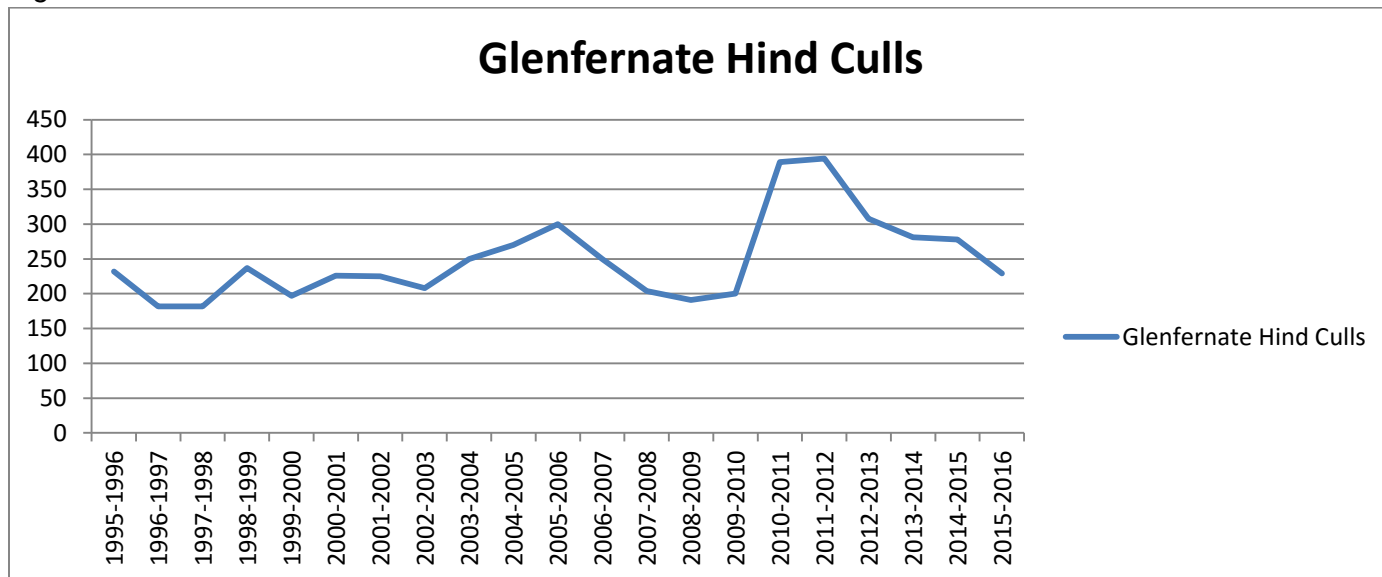
|             |                          | <i>Stags</i> | <i>Hinds</i> | <i>Calves</i> | <i>Density</i> |
|-------------|--------------------------|--------------|--------------|---------------|----------------|
| <b>2015</b> | <i>Spring Population</i> | 4243         | 5247         | 1566          | 19.3           |
|             | <i>Summer Population</i> | 5026         | 6030         | 1809          | 22.5           |
|             | <i>Cull</i>              | 601          | 1101         | 258           |                |
|             | <i>Mortality</i>         | 101          | 121          | 109           |                |
| <b>2016</b> | <i>Spring Population</i> | 4324         | 4808         | 1442          | 18.5           |
|             | <i>Summer Population</i> | 5046         | 5530         | 1659          | 21.4           |
|             | <i>Cull</i>              | 601          | 1101         | 333           |                |
|             | <i>Mortality</i>         | 101          | 111          | 100           |                |
| <b>2017</b> | <i>Spring Population</i> | 4344         | 4318         | 1226          | 17.3           |
|             | <i>Summer Population</i> | 4957         | 4931         | 1479          | 19.9           |
|             | <i>Cull</i>              | 601          | 600          | 300           |                |
|             | <i>Mortality</i>         | 99           | 99           | 89            |                |
| <b>2018</b> | <i>Spring Population</i> | 4257         | 4233         | 1091          | 16.8           |
|             | <i>Summer Population</i> | 4802         | 4778         | 1433          | 19.3           |
|             | <i>Cull</i>              | 601          | 600          | 160           |                |
|             | <i>Mortality</i>         | 96           | 96           | 86            |                |
| <b>2019</b> | <i>Spring Population</i> | 4105         | 4082         | 1187          | 16.4           |
|             | <i>Summer Population</i> | 4699         | 4676         | 1403          | 18.9           |
|             | <i>Cull</i>              | 601          | 600          | 160           |                |
|             | <i>Mortality</i>         | 94           | 94           | 84            |                |
| <b>2020</b> | <i>Spring Population</i> | 4004         | 3982         | 1159          | 16.0           |
|             | <i>Summer Population</i> | 4583         | 4562         | 1369          | 18.4           |

## 3.5 East Sub Group Target Densities

### 3.5.1 Glenferstate

Following the deer count in 2005, hind culls increased to reduce impacts on Beinn a'Ghlo SAC/SSSI.

Figure 3: Historic Culls on Glenferstate



In order to maintain the Beinn a'Ghlo SSSI/SAC in Favourable/favourable Recovering Due to Management condition the property will continue to maintain numbers at current levels. Table 5 shows the results of the Spring 2016 count..

Table 5: Current and future population figures

|              | Stag harvest | 2015       |             |            |             |             | Area         | 2016       |             |            |             |             |
|--------------|--------------|------------|-------------|------------|-------------|-------------|--------------|------------|-------------|------------|-------------|-------------|
|              |              | S          | H           | C          | T           | D           |              | S          | H           | C          | T           | D           |
| Ashintully   | 2            | 310        | 69          | 21         | 400         | 31.5        | 1269         | 24         | 24          | 7          | 55          | 4.3         |
| Balvarran    | 20           | 64         | 28          | 8          | 100         | 11.6        | 865          | 281        | 53          | 28         | 362         | 41.8        |
| Dalmunzie    | 30           | 11         | 72          | 22         | 105         | 4.0         | 2625         | 42         | 138         | 52         | 232         | 8.8         |
| Dirnanean    | 30           | 83         | 576         | 172        | 831         | 53.4        | 1556         | 215        | 143         | 42         | 400         | 25.7        |
| Finegand     | 3            | 22         | 0           | 0          | 22          | 3.4         | 642          | 61         | 56          | 17         | 134         | 20.9        |
| Glenferstate | 100          | 137        | 277         | 83         | 497         | 8.7         | 5742         | 45         | 371         | 104        | 520         | 9.1         |
| Glenkilrie   | 0            | 0          | 0           | 0          | 0           | 0.0         | 840          | 18         | 0           | 0          | 18          | 2.1         |
| Rhiedorrach  | 50           | 226        | 433         | 130        | 789         | 19.7        | 4009         | 186        | 220         | 69         | 475         | 11.8        |
| Straloch     | 25           | 15         | 78          | 23         | 116         | 10.0        | 1158         | 10         | 143         | 35         | 188         | 16.2        |
| <b>Total</b> | <b>260</b>   | <b>868</b> | <b>1533</b> | <b>459</b> | <b>2860</b> | <b>15.3</b> | <b>18706</b> | <b>882</b> | <b>1148</b> | <b>354</b> | <b>2384</b> | <b>12.7</b> |

### 3.5.2 Population Model

In order to deliver the conservation (and economic objectives) of the East Sub Group, habitat monitoring information will be required to inform future culls as well as accurate population data. Using the 2016 foot count, the population model predicts the current population to be around 12.7 deer per km<sup>2</sup>. This represents a significant reduction in density from 2015 figures which estimated a population of 2860 (15.3 deer per km<sup>2</sup>)

Given the need to continue to reduce localised hind numbers, the Group is advised to maintain a reduction hind cull to bring the population closer to 1:1 sex ratio and will use the results of the 2017 count and habitat impact information to further modify the model. The group will have to consider the long term sustainability of the stag resource.

|             |                                 | <i><b>Stags</b></i> | <i><b>Hinds</b></i> | <i><b>Calves</b></i> | <i><b>Density</b></i> |
|-------------|---------------------------------|---------------------|---------------------|----------------------|-----------------------|
| <b>2016</b> | <i><b>Spring Population</b></i> | 882                 | 1148                | 354                  | 12.7                  |
|             | <i><b>Summer Population</b></i> | 1059                | 1325                | 398                  | 14.9                  |
|             | <i><b>Cull</b></i>              | 120                 | 380                 | 114                  |                       |
|             | <i><b>Mortality</b></i>         | 21                  | 27                  | 24                   |                       |
| <b>2017</b> | <i><b>Spring Population</b></i> | 918                 | 919                 | 260                  | 11.2                  |
|             | <i><b>Summer Population</b></i> | 1048                | 1048                | 314                  | 12.9                  |
|             | <i><b>Cull</b></i>              | 105                 | 105                 | 32                   |                       |
|             | <i><b>Mortality</b></i>         | 21                  | 21                  | 19                   |                       |
| <b>2018</b> | <i><b>Spring Population</b></i> | 922                 | 922                 | 264                  | 11.3                  |
|             | <i><b>Summer Population</b></i> | 1054                | 1054                | 316                  | 13.0                  |
|             | <i><b>Cull</b></i>              | 105                 | 105                 | 32                   |                       |
|             | <i><b>Mortality</b></i>         | 21                  | 21                  | 19                   |                       |
| <b>2019</b> | <i><b>Spring Population</b></i> | 928                 | 928                 | 266                  | 11.3                  |
|             | <i><b>Summer Population</b></i> | 1061                | 1061                | 318                  | 13.0                  |
|             | <i><b>Cull</b></i>              | 105                 | 105                 | 32                   |                       |
|             | <i><b>Mortality</b></i>         | 21                  | 21                  | 19                   |                       |
| <b>2020</b> | <i><b>Spring Population</b></i> | 934                 | 935                 | 268                  | 11.4                  |
|             | <i><b>Summer Population</b></i> | 1068                | 1069                | 321                  | 13.1                  |
|             | <i><b>Cull</b></i>              | 105                 | 105                 | 32                   |                       |
|             | <i><b>Mortality</b></i>         | 21                  | 21                  | 19                   |                       |
| <b>2021</b> | <i><b>Spring Population</b></i> | 942                 | 943                 | 270                  | 11.5                  |
|             | <i><b>Summer Population</b></i> | 1077                | 1078                | 323                  | 13.2                  |

### 3.5 Mechanisms to manage deer

| <b>Actions to develop mechanisms to manage deer</b>  | <b>When?</b>               | <b>Who?</b>  | <b>How?</b>  |
|--|----------------------------|--|--|
| <b>3.5.1</b> Final Plan and Minutes of Meetings will be made publically available and published on DMG Website.  | By Spring 2016 and ongoing | DMG Secretary  | <i>DMG Website.</i>  |
| <b>3.5.2</b> Repeat DMG Assessment.  | By Spring 2016 and ongoing | DMG Chair and Secretary  | <i>Use baseline DMG Assessment carried out in 2014.</i>  |
| <b>3.5.3</b> Working plan will be reviewed and updated annually. Management actions will be adjusted and agreed accordingly. An annual report will be produced.  | Annually                   | DMG Secretary and DMG Members  | <i>Provision of data from DMG members in advance of and during meetings. Secretary will update Working Plan and produce an Annual Report to be published on the DMG Website.</i> |
| <b>3.5.4</b> Culls of all species of deer will be delivered and reported on accurately. Cull targets will set and agreed based on information relating to habitat condition, population census, deer welfare and any other relevant information (i.e. where deer are impacting negatively on the Public Interest). | Annually                   | DMG Secretary and DMG Members  | <i>Population models will be updated annually and cull targets set, agreed and delivered accordingly.</i>  |
| <b>3.5.5</b> DMG will carry out a review of Fallow deer range, population densities and movements area in conjunction with neighbouring properties.  | By end of 2107             | DMG Secretary, DMG Members including Pitcarmick Estate and South Perthshire DMG. | <i>Map and short report will be produced showing main areas of fallow deer establishment and movement within an indication of population estimation where possible.</i>          |



|  |  |  |  |
|--|--|--|--|
| <b>3.5.6</b> Atholl Estates and Dalnacardoch will participate in a cross-DMG working group (facilitated by CNPA).                                  | WG will meet 4 times a year.                 | Atholl Estates, Dalnacardoch, Wildland Ltd, Mar Lodge, CNPA, SNH                                       | <i>A working group of relevant properties from Cairngorms &amp; Speyside DMG, West Grampians DMG and East Grampians Sub Area 5 will meet 4 times a year to agree cull targets (based on a population model) and will contribute to providing accurate cull and count data on a regular basis. WGDWG &amp; CNPA will continue to facilitate</i> |
| <b>3.5.7</b> A helicopter count will be conducted in late July 2016 to coordinate with neighbours (Wildland Ltd), Atholl Estates and Dalnacardoch. | Late July 2016                               | Mar Lodge, Atholl Estates, Dalnacardoch, Wildland Ltd, CNPA, SNH                                       | <i>All properties to agree count by spring 2016. West Grampians DMG to coordinate count. Possible funding contribution from CNPA (TBC). Mar Lodge to liaise with Fealar &amp; Mar Estate to discuss incorporating these properties.</i>  |
| <b>3.5.8</b> An aerial count of the whole DMG will be conducted in 2017 and will be repeated in Year 3.  | Spring 2017 & 2020                           | Chair & DMG Members  | <i>DMG will ensure adequate resources in place for repeat helicopter count in 2020 and liaise with neighbouring DMGs to coordinate count at the same time if possible.</i>   |
| <b>3.5.9</b> Recruitment counts will be carried out annually.  | Ideally first two weeks in April but by May. | DMG Members  | <i>Stalkers will undertake sample counts of groups of deer recording locations, stags, hinds and calves. Information will be used to support population modelling.</i>   |
| <b>3.5.10</b> Review deer movements at a landscape level and define the most appropriate scale at which current population models should operate.  | Ongoing                                      | East Grampians, West Grampians and Cairngorms & Speyside DMGs, CNPA and Cairngorms Deer Advisory Group | <i>Representatives of each DMG to meet with SNH and CNPA to scope alternative options by summer 2016 and meet with CDAG by end of 2016. Data from the deer count scheduled for 2017 to be used to discuss deer movements and to help define the most appropriate scale for population modelling to be effective.</i>                           |

|   |             |  |   |
|---|-------------|--|---|
| <b>3.5.11</b> Group will encourage representatives of local community to attend DMG meetings of the local community as well as local agricultural/ woodland/ conservation interests.                            | Annually    | DMG Chair.<br>Stakeholder list to be compiled.   | <i>Meeting dates and Agendas will be publically available on DMG website and circulated to community councils in advance.</i>   |
| <b>3.5.12</b> Members at the east end of the group will collaborate to manage deer to reduce deer impacts on natural heritage and agricultural interests whilst also securing the sustainable harvest of stags. | Biannually  | Ashintully, Balvarran, Glenkilrie, Finegand, Dirnanean, Glenfearnate, Rhiedorrach, Dalmunzie, Straloch, Agricultural Tenants and other Estates as appropriate. Fealar, Tarvie, Solzarie. Pitcarmick also to be included. | <i>Group will meet in the spring (post deer count) and autumn (post stag season) to discuss deer numbers, deer movements and to agree the stag and hind cull. Group will discuss previous culls and any issues (experienced and potential) and use of Out of Season Authorisations will be discussed and agreed where required. Group will report back on habitat monitoring results to help inform management decisions.</i> |
| <b>3.5.13</b> Group will carry out a review of deer movements across WGDMDG area and consider the use of DMG Sub Group meetings to more effectively manage deer at a localised scale.                           | Autumn 2016 | All DMG Members  | <i>Current distribution and deer movements will be reviewed by WSDMG and boundaries of informal Sub-Groups agreed if appropriate. WGDMDG would continue to meet and operate to oversee deer management at a landscape scale.</i>  |
| <b>3.5.14</b> Group will ensure adequate resources are available to fund the administration and aspects of delivery of the DMP  | Autumn 2016 | DMG Chair and Secretary  | <i>DMG will ensure adequate resources for the ongoing delivery of the plan through private funding and through a possible Environmental Cooperation Action Fund (ECAF) application.</i>   |

|   |   |   |  |
|---|---|---|--|
| <p><b>3.5.15</b> To implement strategic fencing on Lude and Urrard to reduce impacts of deer (mainly stags) on agricultural interests during winter/spring.</p> | <p>Consultation with neighbouring properties and DMG completed Spring 2016. Fence erected by Autumn 2016. Baseline habitat monitoring on SSSI completed in Summer 2016.</p> | <p>Lude, Urrard, Atholl, Balnakeilly, Baledmund, Tarvie, Straloch and other properties/Agricultural Tenants as appropriate Monzie</p> | <p><i>Lude to develop proposals for the implementation of a stock fence with off-set electric fence to reduce impacts of wintering stags on agricultural ground. Lude will meet with all neighbouring properties to discuss by Spring 2016, with erection of fence to be completed by autumn 2016. Discussions will consider anticipated changes in deer movements. Atholl are proposing a reduction cull which will reduce impacts on areas out with fence. All access implications and actions will be discussed and agreed with CNPA. Lude will implement baseline habitat monitoring across Ben Vrackie SSSI in Summer 2016, to be repeated in 2019 to monitor changes in herbivore impacts. Discussions will also take into account any potential impacts on DVC risks (anticipated reduced risk of wintering stags crossing A9 in that area to be monitored as part of wider DVC monitoring by the Group). Impacts of fence will be reviewed annually by Lude.</i></p> |
|---|---|---|--|

## 3.6 Designated Sites

| Actions for the delivery of designated features into Favourable Condition   | When?   | Who?  | How?  |
|---|---------|---|---|
| <p><b>3.6.1</b> Beinn a'Ghlo SSSI/SAC: To continue to implement deer management to maintain 'Favourable/ Unfavourable Recovering due to Management' Status.</p>                           | Ongoing | Glenfernate, Atholl Forest Lodge, Lude & Fealar   | <p><i>Estates have implemented a reduction cull to reduce deer impacts on the site. Glenfernate has reduced the population from 59 deer per km<sup>2</sup> in 2010, to just under 9 deer km<sup>2</sup> in 2015. Forest Lodge has reduced numbers from 22 deer per km<sup>2</sup> to 18 deer per km<sup>2</sup>. Estates will continue to manage culls based on monitoring results on the SAC. DMG members to adopt the actions arising from the Beinn a' Ghlo meeting of 15<sup>th</sup> June 2016. It was agreed that deer numbers overall have fallen, and habitat monitoring by SNH shows continued improvement. Members have agreed to continuing management of deer numbers, while noting that there are other pressures on the habitat, such as sheep and walkers.</i></p> |
| <p><b>3.6.2</b> Forest of Clunie SSSI/SPA: Estates will continue to manage moorland habitat to encourage breeding success of avian features (Hen Harrier, Merlin and Short-eared Owl)</p> | Ongoing | Ashintully, Glenkilrie, Finegand, Balvarran, Straloch, Tarvie, Dirnanean, Balnakeilly, Glenfernate, Clunskea & Pitcarmick | <p><i>Properties have formed an East Sub-Group to address local deer management with the purpose of reducing deer impacts on moorland. Estates will seek to work with in collaboration with SNH and other stakeholder organisations such as RSPB/Raptor Study Groups to gather and share information on bird populations (numbers, locations, breeding success) to help inform future habitat management. Estates will report on condition of Dwarf Shrub Heath through Habitat Impact Assessment monitoring, will follow the Muirburn Code and will seek to manage areas of heather to encourage breeding/nesting. Estates may consider use of Agri-Environment Climate Schemes if appropriate. Expect other environmental agencies to feedback information.</i></p>             |

|  |                             |  |   |
|--|-----------------------------|--|---|
| <b>3.6.3</b> Drumochter Hills SAC/SSSI: To continue to manage deer and their impacts so as to bring the site into Favourable/Unfavourable Recovering due to Management.  | By spring 2016 and ongoing. | Dalnacardoch   | <i>Based on the results of the 2013 Herbivore Impact Assessment/SCM, Estate will continue to focus deer management on SAC in order to reduce localised deer impacts. Estate will conduct a deer count in summer 2016 and set appropriate hind culls for 2016/17. Thereafter, deer management will be informed by the full DMG count in 2017 and Habitat Impact Assessments.</i> |
| <b>3.6.4</b> Ben Vrackie, Blair Atholl Meadows, Cairnwell, Glas Tulaichean, Glen Fender Meadows, Glen Garry, Glen Tilt Woods, Straloch Moraines SSSIs: To manage herbivores to maintain existing "Favourable/Unfavourable Recovering Due to Management" status on SSSIs within DMG area. | Ongoing                     | Atholl, Baledmund, Dalmunzie, Fealar, Glenfernate, Lude, Rhiedorrach, Straloch, Urrard | <i>Estates to continue to implement the necessary herbivore management to maintain current status of features.</i>  |

## 3.7 Deer Management and Woodlands

| <b>Actions to manage deer to retain existing native woodland cover and improve woodland condition</b>  | <b>When?</b> | <b>Who?</b> | <b>How?</b>  |
|--|--------------|-------------|--|
| <b>3.7.1</b> Fealar will continue to manage deer impacts through the use of novel electric fencing techniques to achieve good condition in its native woodlands. | Ongoing      | Fealar      | <i>Fealar will continue to manage herbivore impacts on native woodland to deliver woodland regeneration objectives.</i>  |
| <b>3.7.2</b> Balvarran will continue to manage woodlands and moorland for Black Grouse and other conservation interests  | Ongoing      | Balvarran   | <i>Balvarran will continue to manage existing woodland regeneration schemes (and moorland) to improve habitat for Black Grouse. Agreed to send in counts on leks for black grouse.</i> |



|  |         |                          |   |
|--|---------|--------------------------|---|
| <b>3.7.3</b> For properties with SRDP Natural Regeneration Schemes in place, provide evidence of woodland condition in the form of an appropriate survey report if available.  | Year 3  | DMD Members              | <i>Woodland Survey reports.</i>   |
| <b>3.7.4</b> To use ECAF bid to undertake a review of native woodland condition in the Group area (including Riparian woodland), consolidating existing survey reports and implementing woodland herbivore impacts assessment monitoring protocols where required. | Year 3  | DMG Members & Consultant | <i>Subject to successful ECAF bid, delivery of DMG Native Woodland Review Report and recommended actions.</i> |
| <b>3.7.5</b> To implement management to reduce negative impacts including use of Forestry Grant Schemes where practical and appropriate.   | By 2021 | SG Members               | <i>Monitoring results used to inform management actions. Entry into SRDP Schemes.</i>                         |

| <b>Actions to demonstrate DMG contribution to the Scottish Government woodland expansion target of 25% woodland cover.</b>                                    | <b>When?</b> | <b>Who?</b> | <b>How?</b>  |
|---|--------------|-------------|--|
| <b>3.7.6</b> To inform the DMG about any future woodland proposals and incorporate in the DMP - taking account of potential implications for deer management. | Ongoing      | DMG Members | <i>Members will circulate/present proposals to DMG for discussion.</i> |

|  |        |                          |  |
|--|--------|--------------------------|--|
| <b>3.7.7</b> DMG to use ECAF bid carry out a strategic review of potential opportunities for new woodland schemes using the Scottish Government's Forestry Strategy. Review will consider need from a DMG perspective ie shelter provision for deer population at landscape scale. | Year 2 | DMG Members & Consultant | <i>Subject to ECAF bid, delivery of DMG Woodland Expansion Report and recommended actions.</i> |
|--|--------|--------------------------|--|

### 3.8 Wider Habitat Management (Including Peatland)

| <b>Actions to monitor and manage deer impacts in the wider countryside</b>   | <b>When?</b>    | <b>Who?</b>              | <b>How?</b>   |
|--|-----------------|--------------------------|---|
| <b>3.8.1</b> Using revised Best Practice Guidance undergo training, set up plots and carry out a baseline habitat impact assessment (HIA) of the current grazing and trampling impacts on blanket bog & dwarf shrub heath. | May & June 2017 | DMG Members & Consultant | <i>Subject to ECAF bid, Consultant will work with DMG to set up random plots and to provide assistance with data analysis and the production of a report.</i>                           |
| <b>3.8.2</b> Members with existing habitat monitoring will share results with DMG where appropriate.   | Ongoing         | DMG Members              | <i>Members will circulate monitoring results to DMG.</i>  |
| <b>3.8.3</b> Summary of habitat assessment results reported to DMG. Targets and management actions to be agreed.   | Ongoing         | DMG Members              | <i>DMG will agree management decisions based on Habitat Impact Assessment Reports.</i>  |
| <b>3.8.4</b> Repeat HIA and management actions agreed.   | May & June 2020 | DMG Members              | <i>Members will collect repeat monitoring data. Consultant will provide assistance with data analysis and the production of a report. Members will use report to inform management.</i> |

| <b>Actions to improve Scotland's ability to store carbon by maintaining or improving ecosystem health.</b>   | <b>When?</b>                                   | <b>Who?</b>                            | <b>How?</b>  |
|--|--|--|--|
| <b>3.8.5</b> Using revised BPG Guidance set up plots and carry out a baseline habitat impact assessment (HIA) of the current grazing and trampling impacts on blanket bog and native woodland. | As per monitoring schedule in the Working plan | DMG Members                            | <i>As per Actions for woodland and managing impacts in the wider countryside. Members to provide existing survey reports or conduct baseline monitoring and reports.</i> |
| <b>3.8.6</b> Potential areas for Peatland Restoration identified and options for Peatland restoration or management through the Peatland Action Fund promoted to DMG Members                   | By end 2016                                    | DMG Members<br>DMG Chair and Secretary | <i>Members to use Blanket Bog monitoring results as well as assistance from SNH to identify opportunities for Peatland Restoration.</i>                                  |
| <b>3.8.7</b> Contribute to River Basin Management Planning as required.  | Ongoing  | DMG Chairman and Secretary             | <i>DMG will respond to requests as appropriate.</i>  |

### 3.9 Non-native Species Management

| <b>Actions to reduce or mitigate the risk of establishment of invasive non-native species</b>   | <b>When?</b> | <b>Who?</b> | <b>How?</b>  |
|---|--------------|-------------|--|
| <b>3.9.1</b> Muntjac Deer managed as per the Non-native Species Policy (Part 2 of plan).  | Ongoing      | DMG Members | <i>Members will contact local SNH Wildlife Management Officer immediately on suspected sighting of Muntjac.</i>  |
| <b>3.9.2</b> Sika Deer (and Feral Pigs and Feral Goats) managed to prevent their establishment within the DMG area and managed as per the Non-Native Species Policy (Part 2 of plan). | Ongoing      | DMG Members | <i>Where Sika Deer not currently established, Members will report sightings to DMG and will prevent their establishment shoot (within current legal restrictions).</i> |
| <b>3.9.3</b> Record invasive plants species and encourage their control.  | Annually     | DMG Members | <i>Members will inform DMG of invasive plant species at annual meetings and will report on control undertaken.</i>   |

### 3.10 Cultural and Historical Features

| <b>Actions to protect designated historic and cultural features from being damaged by deer e.g. by trampling.</b> | <b>When?</b>   | <b>Who?</b> | <b>How?</b>  |
|---|----------------|-------------|--|
| <b>3.10.1</b> Identify any features within DMG area that may be impacted on by deer.                              | By end of 2016 | DMG Members | <i>DMG members to report at Autumn DMG meeting on features identified.</i>                                   |
| <b>3.10.2</b> If features identified, ensure the appropriate management is implemented and report to DMG.         | Ongoing        | DMG Members | <i>Verbal report/update to DMG.</i>  |
| <b>3.10.3</b> All future fencing proposals to follow Joint Agency Guidance  | Ongoing        | DMG Members | <i>DMG area does not fall within National Scenic Area but new fencing proposals will be reported to DMG.</i> |

### 3.11 Competence and Training

| <b>Actions to contribute to delivering higher standards of competence in deer management.</b>   | <b>When?</b>              | <b>Who?</b>               | <b>How?</b>  |
|---|---------------------------|---------------------------|--|
| <b>3.11.1</b> DMG will adopt the training policy statement (Part 2 of plan).  | Spring 2016               | DMG Members               | <i>Adopted as part of DMP.</i>   |
| <b>3.11.2</b> Ascertain training levels among DMG Members and report on progress on an annual basis.  | By Autumn 2016 & Annually | DMG Secretary and Members | <i>All members asked to provide an initial summary of staff qualifications to DMG Secretary. Verbal report at Spring meeting.</i>                              |
| <b>3.11.3</b> Develop and implement a training programme to assist in the provision of training for DMG Members who lack the necessary qualification or for individuals who wish to enhance their skills. | Annually                  | DMG Chair and Secretary   | <i>Annual training programme to be agreed at Spring meeting. Secretary to organise courses/events. Opportunities for CPD events to be explored by members.</i> |

## 3.12 Public Health and Well-being

| <b>Actions to Identify and promote opportunities contributing to public health and wellbeing.</b>  | <b>When?</b>               | <b>Who?</b>                                   | <b>How?</b>   |
|--|----------------------------|---|---|
| <b>3.12.1</b> Provide information on access, CWD and health information about tick awareness to visitors/clients.                                    | By end of 2016 and ongoing | DMG Secretary & Atholl through Ranger Service | <i>Secretary to circulate leaflets/literature at Spring/Autumn meetings for members to distribute. Information made available on DMG website.</i>   |
| <b>3.12.2</b> Complete relevant Access information for the Heading For the Scottish Hills initiative.  | By end 2016                | Secretary & Relevant DMG Members              | <i>Secretary to liaise with DMG members to coordinate information to SNH and ensure information is kept up to date. Information on Access to be made available on DMG website.</i>  |
| <b>3.12.3</b> Recognise the context of the Cairngorms National Park and seek to deliver the Cairngorms Outdoor Access Strategy & National Park Plan. | Ongoing                    | Appropriate DMG Members                       | <i>Relevant DMG Members will explore opportunities to increase delivery of Cairngorms health, wellbeing and social inclusion objectives. Relevant properties to complete audit of paths to identify any works required, and ensure existing paths are effectively managed and maintained.</i> |
| <b>3.12.4</b> Raise awareness of threats relating to Chronic Wasting Disease and sign up to CWD Biosecurity Policy (Part 2 of plan).                 | By end of 2016 and ongoing | DMG Members                                   | <i>Members to raise awareness of CWD with Clients and Visitors from USA, Canada and Norway.</i>   |
| <b>3.12.5</b> Investigate opportunities for awareness raising/educational events for the local community.  | Ongoing                    | Atholl and DMG Members                        | <i>DMG will explore opportunities to deliver/assist with events. Atholl will seek to raise awareness through the existing Ranger Service - guided walks/events etc.</i>   |
| <b>3.12.6</b> Provide opportunities for any concerns from the local community to be addressed. Ensure Community Council representation at meetings.  | Ongoing                    | DMG Chair and Secretary                       | <i>Meeting dates and Agendas will be publically available on DMG website and circulated to community councils in advance. DMG Chair and Secretary contact details will be available on website. DMG to consider holding an annual public meeting.</i>   |



|  |                |                                    |  |
|--|----------------|------------------------------------|--|
| <b>3.12.7</b> Explore opportunities for greater liaison/collaboration with access takers including Scottish Mountaineering Club and other Organisations such as Mountaineering Council for Scotland, Ramblers Association etc. | By autumn 2016 | DMG Chair and access organisations | <i>DMG to explore opportunities to work together to improve information provision through social media</i>   |
| <b>3.12.8</b> Investigate opportunities to carry out a visitor survey to assess visitor perceptions of deer and land management and identify areas for action.   | By 2018        | Atholl and DMG                     | <i>DMG to scope questions to be included in Visitor Surveys conducted by Atholl and local tourism initiatives. Possible inclusion in extensive visitor survey carried out by CNPA.</i> |

### 3.13 Economics

| <b>Actions to maximise economic benefits associated with deer</b>  | <b>When?</b> | <b>Who?</b> | <b>How?</b>  |
|--|--------------|-------------|--|
| <b>3.13.1</b> Investigate opportunities for membership of SQWV Quality Assurance Scheme.   | By 2021      | DMG Members | <i>On-going discussion at DMG meetings.</i>  |
| <b>3.13.2</b> Investigate opportunities for more effective collection of carcasses and negotiation of prices. DMG to investigate possible collaborative opportunities for the processing of venison/game. Members to seek opportunities to market venison locally. | Ongoing      | DMG Members | <i>Discussion at Spring meeting. Chair &amp; Secretary to negotiate with Game Dealers on DMG behalf.</i> |

|  |                           |                                  |  |
|--|---------------------------|----------------------------------|--|
| <b>3.13.3</b> DMG Members to continue to monitor sustainable harvest of stags for let stalking and to investigate opportunities for cross-property letting of stalking. Opportunities to collectively market stalking also explored. | Spring 2016 and Annually. | Chair & DMG Members              | <i>Population model used to monitor sustainable harvest of stags. Members discuss stalking requirements at Spring meeting. Deer movement meetings following the deer count in 2016 used to monitor stag movements/distribution across the Group.</i> |
| <b>3.13.4</b> DMG to carry out an economic survey of deer management in the area, including an assessment of investment, employment, infrastructure etc.   | By end 2017               | Secretary & Relevant DMG Members | <i>Questionnaire will be developed and completed by members to produce a DMG report of Local Economic Implications of Deer Management.</i>   |
| <b>Actions to minimise the economic costs of deer, and ensure deer management is cost-effective</b>  | <b>When?</b>              | <b>Who?</b>                      | <b>How?</b>  |
| <b>3.13.5</b> DMG to consider the future costs of maintaining fences and financial provision for repairs.  | By end of 2016            | DMG Members                      | <i>Those responsible for fences report on current condition and likely repair timetable.</i>   |
| <b>3.13.6</b> Ensure local agricultural/ forestry interests are consulted on DMP and invited to/represented at DMG meetings.   | Spring 2016               | DMG Chairman and Secretary       | <i>DMG Chair will correspond with relevant parties.</i>  |
| <b>3.13.7</b> Set up monitoring and reporting of DVCs through website, DMG meetings and local Police contact.  | Spring 2016 and ongoing   | DMG Secretary                    | <i>Members of the public asked to report DVCs to DMG Secretary on website. Members record and report DVCs to meetings.</i>   |
| <b>3.13.8</b> Implement actions to mitigate against DVC hotspots including localised deer management, use of signage, fencing etc.   | Ongoing                   | DMG Members                      | <i>Where hot-spots occur, DMG to discuss appropriate actions at meetings.</i>  |

|  |          |             |   |
|--|----------|-------------|---|
| <b>3.13.9</b> Report on Out of Season and Night Shooting authorisations. | Annually | DMG Members | <i>Members to inform DMG Chair/Secretary in advance of intention to apply for authorisations. Members to report numbers of deer culled under authorisation at meetings.</i> |
|--|----------|-------------|---|

## 3.14 Communication

| <b>Actions to ensure effective communication on deer management issues</b>           | <b>When?</b> | <b>Who?</b>   | <b>How?</b>  |
|--|--------------|---------------|--|
| <b>3.14.1</b> Stakeholders consulted on draft plan.                                  | Spring 2016  | DMG Secretary | <i>Draft DMP made available on public website. Relevant stakeholders identified and invited to consult. Interested parties invited to attend a consultation meeting in Blair Atholl.</i> |
| <b>3.14.2</b> Final Plan and Minutes of Meetings will be published on DMG Website.   | Spring 2016  | DMG Secretary | <i>DMG Website.</i>  |
| <b>3.14.3</b> DMG Constitution and ADMG Principles of Collaboration adopted (Part 2) | Spring 2016  | DMG Members   | <i>Adopted as part of DMP.</i>   |
| <b>3.14.4</b> Agree and adopt a DMG Communications Policy                            | Spring 2016  | DMG Members   | <i>Adopted as part of DMP.</i>   |

## 3.15 Deer Welfare

| <b>Actions to ensure deer welfare is taken fully into account at individual animal and population level</b> | <b>When?</b> | <b>Who?</b> | <b>How?</b>   |
|---|--------------|-------------|---|
| <b>3.15.1</b> Agree and adopt welfare policy (Part 2 of plan).  | Spring 2016  | DMG Members | <i>Implemented through every day Best Practice in deer management.</i>    |
| <b>3.15.2</b> Consider opportunities for CPD/Training in relation to deer welfare.                          | Autumn 2017  | DMG Members | <i>DMG will run at least one event to share Best Practice Management.</i> |

|  |         |                          |   |
|--|---------|--------------------------|---|
| <b>3.15.3</b> Provide information on welfare indicators annually. Baseline information established in year 1 of DMP and welfare indicators reported on annually. Any resulting management actions agreed and implemented by members. | Ongoing | DMG Members              | <i>Deer managers to provide information on hind reproduction and average larder weights.</i>                                |
| <b>3.15.4</b> Any new fencing in DMG area will consider welfare implications in design and extent and the appropriate management undertaken.   | Ongoing | DMG Members              | <i>New fencing proposals will be consulted with DMG.</i>  |
| <b>3.15.5</b> Monitoring and reporting of significant levels of winter mortality.  | Ongoing | DMG Members              | <i>Deer managers will provide information (figures &amp; location) on winter mortality.</i>                                 |
| <b>3.15.6</b> Carry out a review of fencing and wintering ground and identify opportunities to open up woodland to deer.   | Year 2  | DMG Members & Consultant | <i>Subject to ECAF bid, carry out as part of the delivery of the DMG Woodland Expansion Report and recommended actions.</i> |

### 3.6 Monitoring and Review Schedule

| Actions   | Who?           | Year 1<br>2016-17  | Year 2<br>2017-18  | Year 3<br>2018-19        | Year 4<br>2019-20  | Year 5<br>2020-21         |
|---|----------------|--------------------|--------------------|--------------------------|--------------------|---------------------------|
| Helicopter Deer Count                                       | DMG Members    |                    | Winter<br>Count    |                          |                    | Winter<br>Count           |
| Recruitment Count   | DMG Members    | Spring &<br>Summer | Spring &<br>Summer | Spring &<br>Summer       | Spring &<br>Summer | Spring<br>Summer          |
| Habitat Training  | DMG Members    | Spring/<br>Summer  |                    |                          |                    |                           |
| Habitat Monitoring<br>Blanket Bog                           | DMG Members    | Summer             |                    |                          | Summer             |                           |
| Habitat Monitoring<br>Dwarf Shrub Heath                     | DMG Members    | Summer             |                    |                          | Summer             |                           |
| Habitat Monitoring<br>Native Woodland<br>Review             | DMG Members    |                    |                    | Summer                   |                    |                           |
| Woodland Expansion<br>Review                                | DMG Members    |                    | Summer             |                          |                    |                           |
| Review Habitat<br>Results                                   | DMG Members    | Ongoing            | Ongoing            | Ongoing                  | Ongoing            | Ongoing                   |
| Set & Agree Culls   | DMG<br>Members | Spring &<br>Autumn | Spring &<br>Autumn | Spring &<br>Autumn       | Spring &<br>Autumn | Spring &<br>Autumn        |
| Collate DMG<br>Information & Review<br>Working Plan Actions | DMG Secretary  | Bi-<br>annually    | Bi-<br>annually    | Review<br>DMP-<br>Spring | Bi-<br>annually    | Review<br>DMP-<br>Spring  |
| Produce Economic<br>Report                                  | DMG Secretary  |                    | Autumn             |                          |                    |                           |
| Produce Annual<br>Report                                    | DMG Secretary  | Spring             | Spring             | Spring                   | Spring             | Review<br>DMP -<br>Spring |